

# BREWER CHRISTIAN COLLEGE AND GRADUATE SCHOOL

PO Box 77657 • Jacksonville, Florida 32226  
904-374-1497 • [info@BrewerChristianCollege.com](mailto:info@BrewerChristianCollege.com)  
[www.BrewerChristianCollege.com](http://www.BrewerChristianCollege.com)



Chapel 2007

[www.OnlineChapel.org](http://www.OnlineChapel.org)

## Table of Contents

Mission Statement	1
Greetings from the Chapel Office	4
Statement of Faith	6
History	8
Four Fold Worship	10
Gather	14
The Word	18
Giving Thanks	20
Go Forth	22
Chapel Information	24
Chapel Policies for Students	26



[www.onlinechapel.org](http://www.onlinechapel.org)

## BCC Chapel Mission Statement

The mission and purpose of the chapel program is:

- Proclamation of the Word —  
the teaching, exposition, and presentation of scriptural truth online through interactive presentations of the Word of God in written, spoken and musical form.
- Community response to the Word —  
the corporate celebration of God's goodness in Christ through praise, sharing, praying, and mutual edifying.
- Challenge to the community —  
teaching which calls for the integration of Christian faith, hope, and love in all of life's issues, inspiring service in the community and world on behalf of Jesus Christ

## Brewer Christian College Mission Statement

Our Mission is to provide quality, Biblically based academic programs and one on one mentoring to prepare and equip Christian ministers, professionals, and laypersons, for their religious and professional lives.

## *Greetings from the Chapel Office*



Dear Friends,  
Greetings from the Chapel Office. We want to welcome you to our online chapel program. The chapel is designed to bring encouragement and refreshment to you as a member of the Brewer Christian College family. Services are offered weekly during the semesters, each one specially designed for you, the online participant.

Please remember to respond to the Word by using the message boards available at the end of the service. Please feel welcome to post your prayer requests and praise reports, we check the boards daily and lift them up to the Lord.

God Bless,

Dr. Mary Jane Brewer, Dean of Chapel

## What We Believe

### BCC Statement of Faith

As an independent, educational ministry, Brewer Christian College is thoroughly biblical in its philosophy of education. We affirm the Divine inspiration, truthfulness, and authority of both the Old and New Testament scriptures, in their entirety, and the only written Word of God, without error in all that it affirms, and the only infallible rule of life, faith, and practice. We also affirm the power of God's word to accomplish His purpose of salvation. The message of the Bible is addressed to all mankind, for God's revelation in Christ and in Scripture is unchangeable. Through it, the Holy Spirit still speaks today. He illuminates the minds of God's people in every culture to preserve its truth freshly through their own eyes.

Jesus Christ is the image of the invisible God, which is to say He is Himself very God. He took upon Himself our nature, being conceived by the Holy Spirit and born of the Virgin Mary. He died on the cross as a substitutionary sacrifice for the sins of the world. He arose from the dead in the body in which He was crucified. He ascended into heaven in that body glorified, where He is now, our interceding High Priest.



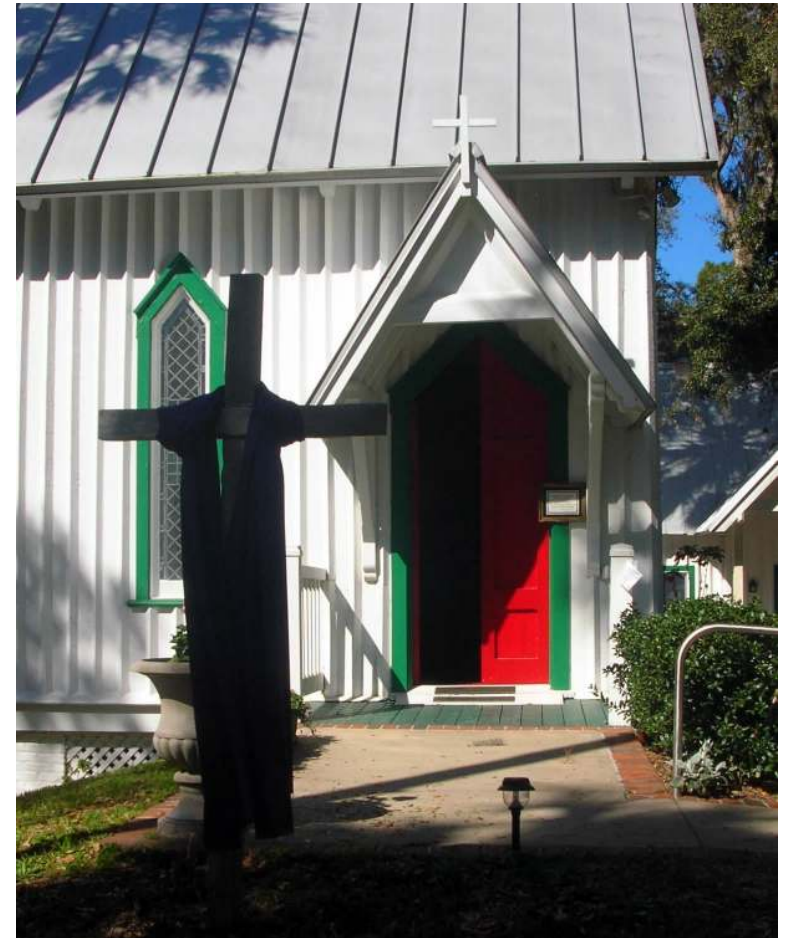
“Christ in the Garden”

## *Brewer Christian College Chapel*

### History

Brewer Christian College began the online chapel program under the leadership of Dr. Mary Jane Brewer in July of 2005 in preparation for the Fall 2005 semester, holding the first online service on September 16, 2005. The goal was simple, to corporately unite the faculty, staff and student body of Brewer Christian College on a weekly basis by focusing on the Word of God.

Beginning with simple text driven four-fold worship experiences, the online chapel services have evolved into a highly interactive audio/visual presentation complete with interactive “flash” Scripture readings and prayers, streaming video, online chat and message boards, downloadable screensavers and wallpaper that featured the weeks Scripture readings, and more. The chapel program has literally revolutionized the college and is has become the center of school communication, prayer, and community. Through the use of the chapel message boards students, as well as faculty and staff, have the opportunity to lift up prayer requests and praise reports, share struggles and victories and simply get to know each other in a safe, monitored environment.



“All are welcome”

## Four Fold Worship

### What we do and why...

Brewer Christian College is a Christian educational institution. Every decision made by the school is designed through careful research, then brought to the Lord in prayer. Only then, and with leadership approval and confirmation of the Holy Spirit, do we implement. The chapel services are based on the concept of four fold worship. The four fold pattern is historical in nature, dating to the earliest known witnesses of the New Testament church, both in the Bible and historical first and second century documents, like Justin Martyr's First Apology written less than a hundred years after Christ's ascension.



## *Four Fold Worship*

**Four fold worship follows a simple, but meaningful pattern.**

1. Worshippers first gather together, drawn by the Holy Spirit to remember and celebrate the covenant relationship that we have with God.
2. Once gathered, the united community of Christ together proclaim the Word of God through corporate reading, teaching and preaching.
3. When the powerful, life-changing story of Christ's faithfulness to a lost and dying world is received by ready and willing servants the only response is true gratitude. In many services this celebration takes place at the communion table as worshippers gather for the Eucharist or to "give thanks", from the Greek word "eucharistos", to the Lord as they celebrate the greatest gift ever given, the Son of God sacrificed for our sins, in our place. In other services this may also be accomplished by offering a corporate song of thanksgiving or a time at the altar for recommitment and prayer.
4. The final action in fourfold worship is to send the community of worshipers into the world with the mission of promoting positive social action and spreading the message of Jesus Christ.



**"New Beginnings"**

## Gather

The first action of fourfold worship is the act of gathering. Dr. Robert Webber defines this as “an act of divine intervention with which God calls the people to gather and in which the worshipping community is actualized.” This portion of the online service prepares the worshiper, responding to the invitation of God to worship while evoking a feeling of celebration and expectation. The goal in this phase of the service is to provide the online worshiper with a time of quiet reflection and pause, and invitation to join the celebration.

At the beginning of the chapel, students are encouraged to offer a written greeting and short prayer of personal invitation for the Lord to move through the worship experience.

The gathering portion of the Brewer Christian College chapel service begins with a musical and visual PowerPoint type display. Participants are then encouraged to greet each other through to an online “guest book” where they you can post initial comments, words of encouragement for others in the chapel community.

The goal of this multi-media presentation is to create an environment of worship for the worshiper online by offering a series of photographs of church buildings, large and small, each chosen to evoke a feeling of intimacy. As the music and pictures progress, the online worshiper is invited to enter through the door of the church, up the center aisle and to the lectern where the Word of God sits open as an invitation to the hearer.

For all portions of the online chapel services, there are two options; one optimized for dial-up Internet connections and a second for broadband or high speed connections. Both are identical in content, the main difference is the almost negligible difference in video and audio quality. The dial-up path also provides longer presentation “pre-loaders” to avoid skipping and stopping (buffering) of the presentation once are begins.





## Gather

The music for the gathering was written, composed and performed by Kirk and Deby Dearman. Kirk and Deby are the founders of Come to the Quiet, a powerful music ministry that marries the historical liturgy with contemporary lyrics and melodies, softly, yet powerfully inviting the worshipper into the presence of God. Most recognize the Dearmans through their praise and worship chorus, “We Bring the Sacrifice of Praise” which has been Translated into every major language and sung in churches around the world and ranked in the top 10 for 10 straight years on the charts of Christian Copyright Licensing International. Kirk and Deby have graciously offered their combined talents to Brewer’s chapel program and the song provides a perfect invitation to worship.

For more information on Kirk and Deby visit their website at [www.ComeToTheQuiet.com](http://www.ComeToTheQuiet.com).



Kirk and Deby Dearman

## COME TO THE QUIET

Come to the quiet, a silent retreat  
Come to the quiet and sit at His feet  
Come to the quiet and be refreshed  
Come to the quiet and worship Jesus

Enter the silence where true life is found  
Enter the silence where God's love abounds  
Enter the silence and be at peace  
Enter the silence and listen  
Listen to His Word

### CHORUS

Come, Holy Spirit, surround us  
Set us ablaze with desire  
Come, Holy Spirit, refresh us  
Ignite every heart with fresh fire

We've come to the quiet, a silent retreat  
We've come to the quiet to sit at His feet  
We've come to the quiet to be refreshed  
We've come to the quiet to worship  
Worship Jesus

Kirk and Deby Dearman  
@2003 Expressions of Praise/Integrity Music, Inc.

## *The Word*

The second part of Brewer Christian College's online chapel is the service of the Word. From the first instance of public worship described in Scripture and throughout the history of the church, the proclamation of the Word of God has been a central act of worship. In this fold, the Brewer Christian College Online Chapel program creates a presentation of the Scripture that encourages participation as illustrated in receptivity, reflection and submission to our Lord.

With each chapel, the school creates interactive audio/visual presentations for the Scriptures found in the Book of Common Prayer lectionary for the corresponding week. Our choice to use the lectionary is two-fold. First, it encourages students who attend churches implementing the same lectionary to further reflect on that week's sermons and lessons. The lectionary also provides the church with the richness of studying the entire Word of God over a period.

The original music that accompanies the Scripture readings is recorded in the College's studio or is supplied by students, alumni or our artist in residence, Simon Miner. For more information on our artist in residence visit [www.simonminer.org](http://www.simonminer.org).



## *The Table... Giving Thanks*

The third action in Brewer Christian College's chapel program is the service of the table, or in what we have come to refer to as "The Virtual Thanksgiving."

In response to hearing the Word of God, the believer is encouraged to respond to God's faithfulness in gratitude. Coming to the table is an act of thanksgiving, the Eucharist celebrates the obedience of Jesus as evidenced in His crucifixion, rejoices in the victory of His resurrection and His free gift of salvation.

One of the primary goals of Brewer's online chapel program is to provide immediate opportunities to respond to the Word of God, in both word and deed. Although the idea of online communion service may be untraditional, and in no way should be considered a substitute for gathering together in person, it can be a great time of unity for the Body as well as a chance for the believer to focus on the sacrifice of Christ at Calvary. A detailed theological statement on the subject of online communion is available by contacting the chapel office.



**"The Lamb of God"**

*Go Forth...*

The final action in Brewer Christian College's fourfold chapel service is to send the community of worshipers into the world with the mission of promoting positive social action and spreading the message of Jesus Christ. The goal is "to meaningfully dismiss the worshippers with a call to social action and provide immediate opportunities to respond." To facilitate this online, Brewer's online chapel service dismisses the students with a written benediction, immediately followed by a series of hyperlinks to honorable, Godly charitable online organizations and opportunities for online evangelism and discipleship.

\*See Dr. Robert Webber's book "Worship Old and New" for more on four-gold worship.

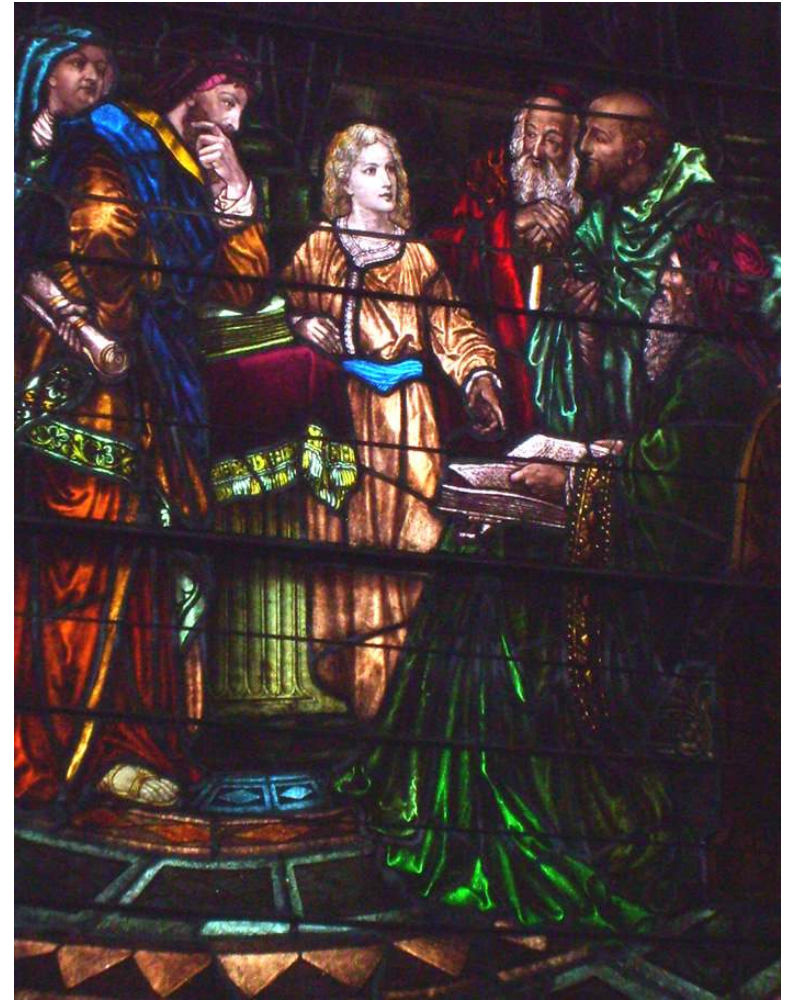


**"The Great Commission"**

## *Going Deeper...*

Following the benediction, the chapel service provides worshippers with a brief list of hyperlinks designed to promote further study of the Word of God. The Internet's ability to hyperlink provides the online worshipper with an endless amount of trusted scholarly material for Biblical studies. At the end of each chapel service, direct links for each of the Scripture lessons guide the online congregant to the appropriate commentaries, lexicons, study guides and more.

Typically, each linked page contains over 300 helpful study guides. Other student resources include desktop wallpaper including Scriptures and art from the chapel service for students to use and reflect on all week. The screensavers are designed to remind students of the Scripture lessons every time their computer enters this mode.



“Christ Teaching at the Temple”

## Chapel Information

Brewer Christian College's online chapel services are held weekly during our course semesters. Participation is mandatory for every student who is currently enrolled in the school. The chapel services will be posted for an entire week from the first date that they are offered, and you can watch and respond any time during the week (even at 2 am if that is all your schedule allows!)

Chapel message boards are open to all, please feel welcome to post prayer requests and praise reports at any time.

### **Link to Online Chapel Service:**

[Http://www.OnlineChapel.org](http://www.OnlineChapel.org) or  
<http://www.brewerchristiancollege.com/Chapel/>

### **Email the chapel office at:**

[chapel@brewerchristiancollege.com](mailto:chapel@brewerchristiancollege.com)

### **Dean of Chapel:**

Dr. Mary Jane Brewer  
Email: [drmj@brewerchristiancollege.com](mailto:drmj@brewerchristiancollege.com)

### **Artist in Residence:**

Simon Miner  
Email: [Simon@pedalpoint.com](mailto:Simon@pedalpoint.com)  
Web: [www.simonminer.org](http://www.simonminer.org)

### **Credits:**

Material written by Rev. Chris Brewer

### **Photography:**

All photos taken by Rev. Chris and Erin Brewer

Locations photographed:

Evangelical Lutheran Church of the Ascension  
Wright Square  
120 Bull Street  
Savannah, Georgia  
Pages 7, 23, 25

Saint George Episcopal Church  
10605 Fort George Road  
Fort George Island, Florida  
Pages 9, 11, 15

Saint Peters Episcopal Church  
Atlantic Avenue and 8th Street  
Fernandina Beach, Florida  
Pages Cover, 11, 13, 19, 21

©2007 Brewer Christian College



PO Box 77657

Jacksonville, Florida 32226

Phone: 904-374-1497

Email: [chapel@brewerchristiancollege.com](mailto:chapel@brewerchristiancollege.com)

Web: <http://www.OnlineChapel.org>